



Application

- Can be used to transfer clean water or other liquids similar to water in physical and chemical properties
- Suitable for small living water supply, automatic water sprinkler system, small air conditioner system or supporting equipment etc.

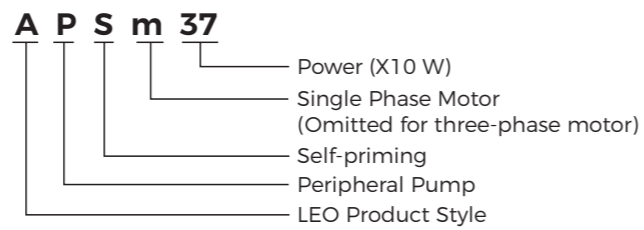
Pump

- Special anti-rust treatment for cast iron pump body and support
- Anti-block system for impeller
- Brass impeller
- AISI 304 shaft
- Max. liquid temperature: +60°C
- Max. suction: +8 m
- Self-priming

Motor

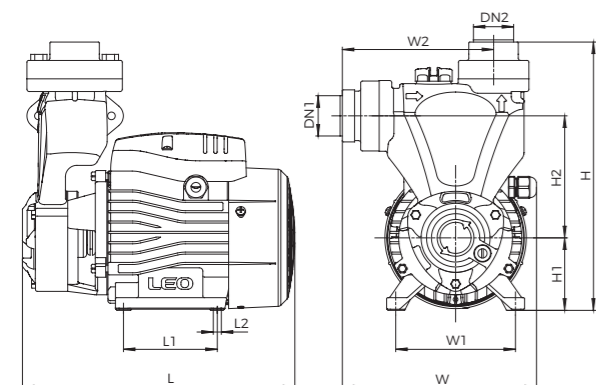
- Low noise&Long life bearing
- Motor with cooper winding
- Built-in thermal protector for single phase motor
- Insulation class: F
- Enclosures class: IPX4
- Max. ambient temperature: +50°C
- IE2 motor for APS110

Identification Codes



Technical Data

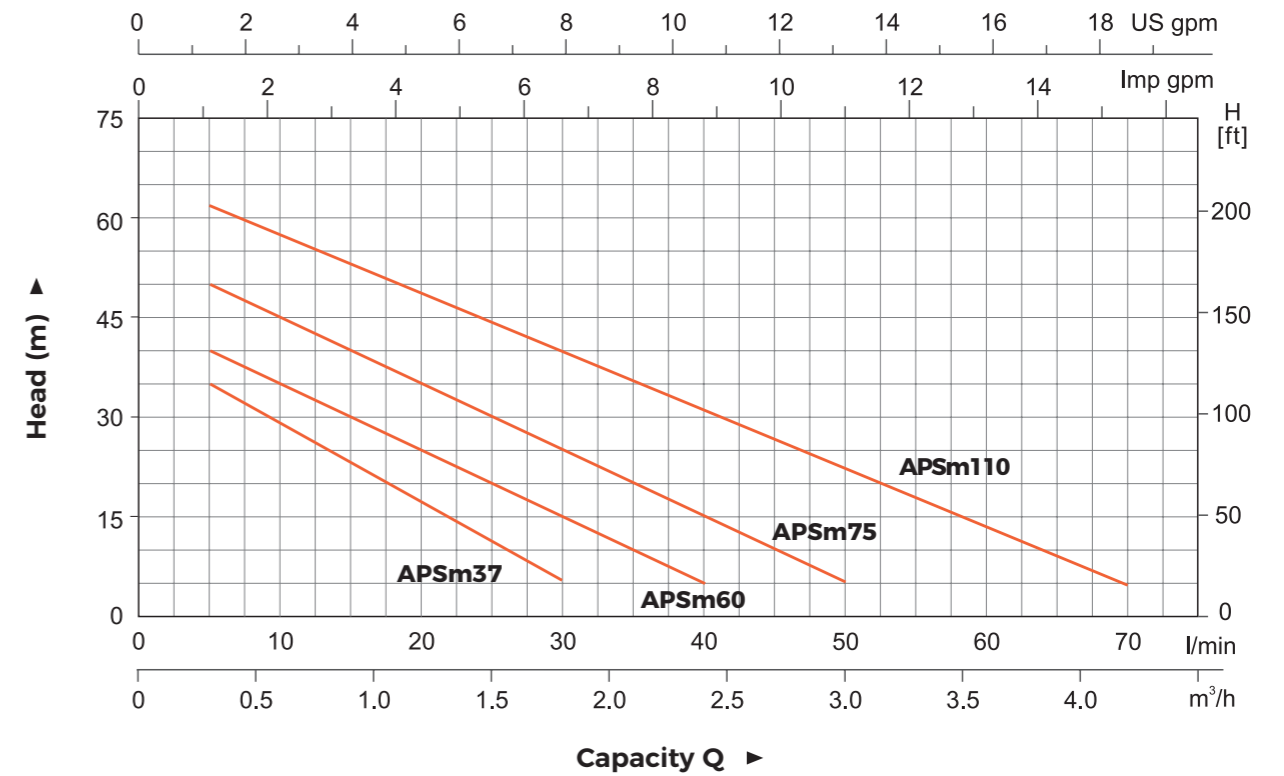
Model		Power		Q(m ³ /h)																						
Single Phase	Three Phase	kW	HP	0	0.3	0.6	0.9	1.2	1.5	1.8	2.1	2.4	3.0	3.3	3.6	4.2	Q(l/min)									
				0	5	10	15	20	25	30	35	40	50	55	60	70	H (m)									
APSm37	-	0.37	0.5	40	35	28	22	18	12	5	-	-	-	-	-	-										
APSm60	-	0.6	0.8	45	40	32	28	22	18	12	8	5	-	-	-	-										
APSm75	-	0.75	1.0	55	50	42	38	32	28	22	18	12	5	-	-	-										
APSm110	APS110	1.1	1.5	65	60	55	50	45	40	35	30	25	20	15	10	5										



Dimension

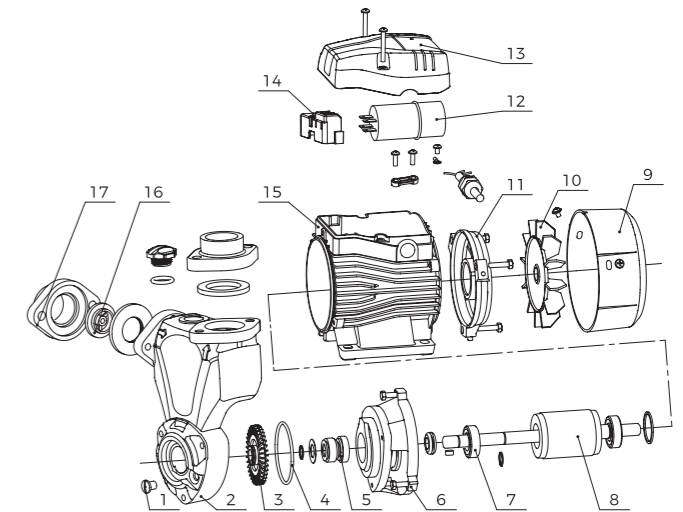
Model	DN1	DN2	L (mm)	W (mm)	H (mm)	L1 (mm)	W1 (mm)	W2 (mm)	H1 (mm)	H2 (mm)	L2 (mm)
APSm37	1"	1"	237	165	230	80	100	128	63	106	8.5
APSm60	1"	1"	260	174	251	90	112	132	73	120	8.5
APSm75	1"	1"	270	179	260	90	112	141	73	130	8.5
APSm110	1 1/2"	1 1/2"	310	200	292	100	125	160	86	138	9

Hydraulic Performance Curves



Material Table

No.	Part	Material
1	Screw	Q235
2	Pump body	HT200
3	Impeller	HPb59-1
4	O-ring	NBR
5	Mechanical seal	
6	Pump support	HT200
7	Deep groove ball bearing	
8	Rotor	
9	Fan cover	PP
10	Fan	PP-GF10
11	End plate	ADC12
12	Capacitor	
13	Cover box	PP-GF20
14	Wiring base assembly	PC
15	Stator	
16	Check valve	
17	Water inlet connector	HT200



Package Information

Model	GW (Kgs)	L (mm)	W (mm)	H (mm)	Quantity (PCS/20'TEU)
APSm37	7.2	275	200	265	2040
APSm60	11.2	300	215	290	1736
APSm75	12.7	300	215	290	1365
APSm110	19.04	355	240	320	998

