



### Application

- Can be used to transfer clean water or other liquids similar to water in physical and chemical properties
- Suitable for lifting water from the well, sprinkling irrigation in garden, pressure boosting of running water, and supporting equipment etc.

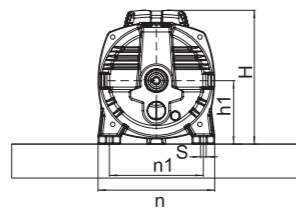
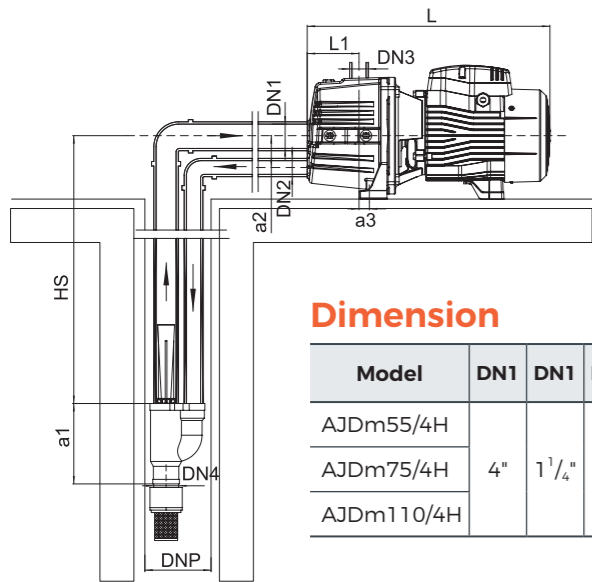
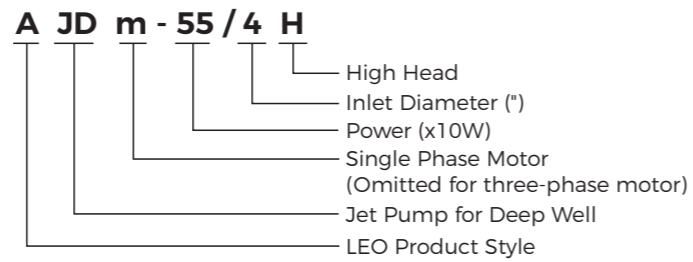
### Pump

- Cast iron pump body and support under special anti-rust treatment
- Stainless steel impeller
- AISI 304 shaft
- Max. liquid temperature: +60°C
- Max. suction: +40 m

### Motor

- Low noise&Long life bearing
- Motor with copper winding
- Built-in thermal protector for single phase motor
- Insulation class: F
- Enclosures class: IPX4
- Max.ambient temperature: +50°C

### Identification Codes



### Dimension

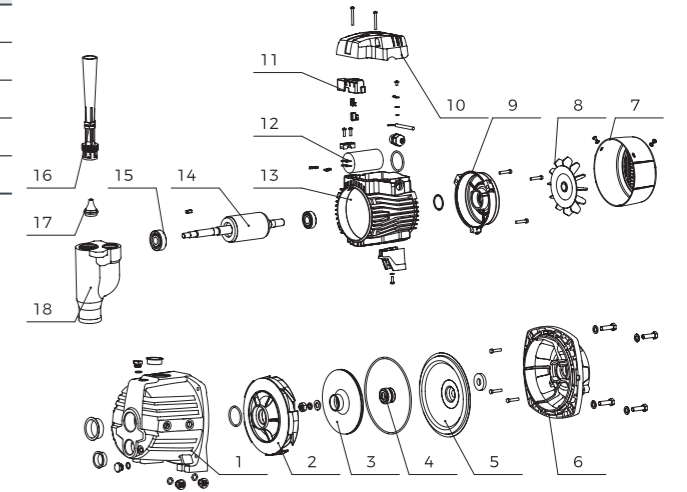
Model	DN1	DN1	DN2	DN3	DN4	L (mm)	L1 (mm)	n (mm)	n1 (mm)	H (mm)	h1 (mm)	a1 (mm)	a2 (mm)	a3 (mm)	S (mm)
AJDm55/4H						370	77	190	150	212	100		53	17	10
AJDm75/4H	4"	1 1/4"	1"	1"	1"							160			
AJDm110/4H						429	90	206	166	236	112			12	

### Technical Data

Model	Power		HS (m)	Q (L/min)	H (m)																		
	kW	HP			0	2	4	6	8	10	12	14	16	18	20	22	24	26	28	30	32	34	
AJDm55/4H	0.55	0.75	15	39	35	33	29	27	25	23	21	19	17	15	14	13	-	-	-	-	-		
AJDm75/4H	0.75	1.0			50	46	43	40	37	34	32	30	28	26	24	22	20	19	18	17	-	-	
AJDm110/4H	1.1	1.5			75	70	66	62	58	55	52	49	47	45	43	41	39	37	35	33	31	29	
AJDm55/4H	0.55	0.75	20	32	28	25	23	21	19	17	15	13	-	-	-	-	-	-	-	-	-		
AJDm75/4H	0.75	1.0			42	39	36	33	30	27	25	23	21	20	18	17	-	-	-	-	-	-	
AJDm110/4H	1.1	1.5			67	62	58	54	51	48	45	43	41	39	37	35	33	31	29	27	-	-	
AJDm55/4H	0.55	0.75	25	25	21	18	16	14	12	-	-	-	-	-	-	-	-	-	-	-	-		
AJDm75/4H	0.75	1.0			35	32	29	26	23	21	19	17	-	-	-	-	-	-	-	-	-	-	
AJDm110/4H	1.1	1.5			59	54	50	47	44	41	38	36	34	32	30	28	-	-	-	-	-	-	
AJDm55/4H	0.55	0.75	30	18	15	12	-	-	-	-	-	-	-	-	-	-	-	-	-	-	-		
AJDm75/4H	0.75	1.0			28	25	22	19	17	-	-	-	-	-	-	-	-	-	-	-	-	-	
AJDm110/4H	1.1	1.5			51	47	43	40	37	34	32	30	28	-	-	-	-	-	-	-	-	-	
AJDm75/4H	0.75	1.0	35	21	18	16	-	-	-	-	-	-	-	-	-	-	-	-	-	-	-		
AJDm110/4H	1.1	1.5			44	40	36	33	30	27	-	-	-	-	-	-	-	-	-	-	-	-	
AJDm110/4H	1.1	1.5			37	33	30	27	-	-	-	-	-	-	-	-	-	-	-	-	-	-	

### Material Table

No.	Part	Material	No.	Part	Material
1	Pump body	HT200	14	Rotor	
2	Water outlet cover	PP-GF30	15	Bearing	
3	Impeller	PP-GF30	16	Lance tube	PP-GF30
4	Mechanical seal		17	Nozzle	PP-GF30
5	Bracket cover	AISI304	18	Ejector	HT200
6	Bracket	ADC12			
7	Fan cover	PP			
8	Fan	PP-GF 10			
9	End plate	ADC12			
10	Cover box	PP-GF20			
11	Wiring base assembly	PC			
12	Capacitor				
13	Stator				



### Package Information

Model	GW (Kgs)	L (mm)	W (mm)	H (mm)	Quantity (PCS/20'TEU)
AJDm55/4H	16.1	500	215	240	1053
AJDm75/4H	17.4	500	215	240	1053
AJDm110/4H	23.5	585	230	265	728

